



ACO v praksi

ALEJA

Nakupovalno središče Ljubljana Šiška

V ljubljanski Šiški se bohoti najmodnejše nakupovalno središče v državi. 32 tisoč kvadratnih metrov površin, tri nadstropja, 80 trgovin, več kot 1600 parkirnih mest, 200 parkirnih mest za kolesa, 13 polnilnic za električna vozila ...

Posebnost te nakupovalne oaze je fasada, ki posnema zmajeve luske, zelena streha s tekaško stezo, večnamenskim igriščem in fitness napravami.

Nakupovalno središče se ponaša s številno in raznovrstno ponudbo, kot so tudi številni in raznovrstni ACO proizvodi, ki so vgrajeni v objektu in okolici.



Vgradnja linijskega požiralnika **ACO Profiline** neposredno ob panoramska vrata omogoča izvedbo prehoda iz objekta na teraso z lesenimi podnicami brez arhitektonskih ovir.

ACO. creating
the future of drainage





Mostni požiralnik ACO HSD-2 v funkciji na parkirišču nad garažno hišo. Namenjen dvonivojskemu odvodnjavanju: odvodnjavanje površinskih vod in hkrati pronicajočih vod iz hidroizolacije na stropni plošči podzemne garažne hiše.



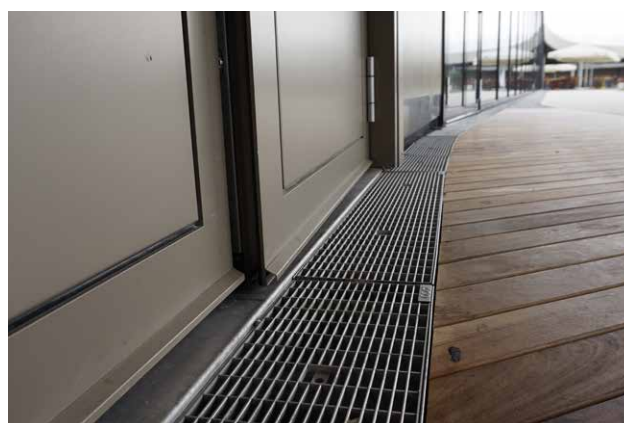
Gostinski lokali v prvem nadstropju so opremljeni z **ACO higienskimi požiralniki in kanaletami** iz nerjavečega jekla, ki so načrtovani v skladu s smernicami EHEDG in ustrezajo najstrožjim zahtevam za preprečevanje kontaminacije hrane s škodljivimi bakterijami.



Masivne litoželezne drevesne rešetke zagotavljajo drevesom normalne življenjske pogoje tudi v popolnoma urbanem okolju, saj kljub vodoneprepustnim tlem omogočajo koreninskemu sistemu dovajanje zraka in vode ter preprečujejo poškodbe vsled parkiranih vozil.



Vtočna rešetka Multitop z vstavljenim vedrom za grobe nečistoče in geometrijo rež varno za pešce in kolesarje.



ACO Profiline vgrajen ob fasadi na ravni strehi objekta ščiti gradbeno konstrukcijo pred poškodbami, ki lahko nastanejo zaradi dotekanja padavinske vode po fasadi, oknih in vratih ter zadrževanja vode na terasi.

Objekt: Aleja, Ljubljana
Investitor: SES Slovenija
Arhitekturni biro:
 ATP architects and engineers
Izvajalec gradbenih del:
 Strabag d.o.o., CGP d.d.
Leto izvedbe: 2020

Vgrajeni proizvodi:

■ **Okolica:**

Linjski požiralniki Multiline, vtočne rešetke Multitop, mostni požiralniki HSD-2, kanalizacijski pokrovi Multitop RSS, specialni pokrovi Secant, travne rešetke, drevesne rešetke

■ **Objekt:**

Litoželezni požiralniki v garažni hiši, pokrovi za zapolnitev s poljubnim tlakom Uniface, odvodnjavanje teras in fasade Profiline, higienski požiralniki in kanalete iz nerjavečega jekla za odvodnjavanje v gastronomiji

ACO gradbeni elementi,
 zastopanje d.o.o.
 Obrtniška 9
 SI-3240 Šmarje pri Jelšah
 Tel.: 03/817 18 80
 Fax: 03/817 18 82

info@aco.si
www.aco.si

ACO. creating
 the future of drainage





ACO Reference

ALEJA

Shopping Center, Ljubljana-Šiška

In Ljubljana's district Šiška proudly stands new shopping center Aleja – the most modern mall in the country.

32 thousand square meters of space, three floors, 80 shops, more than 1600 parking spaces, 200 parking spaces for bicycles, 13 charging stations for electric vehicles ...

A special feature of this shopping oasis is the facade, which imitates dragon scales, a green roof with running track, multi-purpose playground and fitness equipment.

The shopping center boasts a large and varied offer, as well as many and varied ACO products that are installed in the facility and its surroundings.



The installation of the ACO Profiline drainage channels next to the panoramic door enables the transition from the building to the wooden terrace without architectural barriers.

ACO. creating
the future of drainage





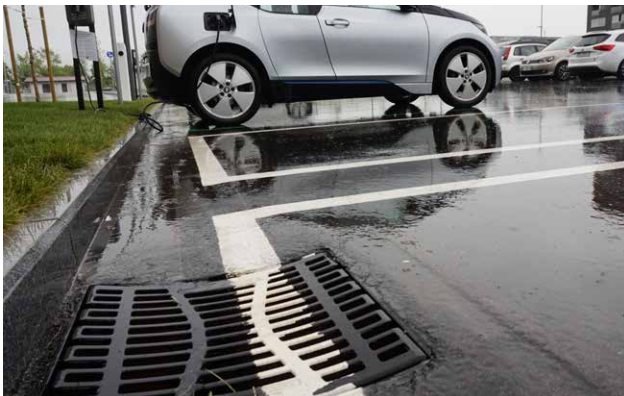
Bridge gully ACO HSD-2 installed on the parking lot above the garage house. Intended for two-level drainage: drainage of surface water and penetrating water from waterproofing on the ceiling panels of an underground garage house.



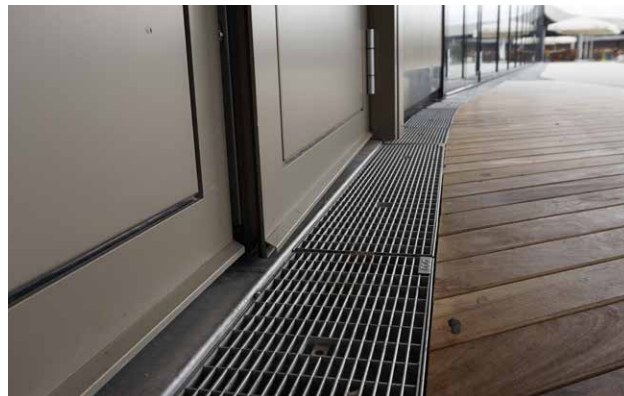
The restaurants on the first floor are equipped with **ACO hygienic gullies and stainless steel channels**, which are designed in accordance with the EHEDG guidelines and meet the strictest requirements for prevention of food contamination by harmful bacteria.



Massive cast iron tree grates provide normal living conditions for trees – even in a completely urban environment – because despite waterproof ground they enable air and water supply for the root system and prevent damage due to parked vehicles.



Multitop inlet grating with inserted bucket for coarse dirt and geometry of slots, which is safe for pedestrians and cyclists.



ACO Profiline installed next to the facade on the flat roof of the building protects the building structure from damage that can occur due to the inflow of rainwater through the facade, windows and doors and water retention on the terrace.

Project: Aleja, Ljubljana
Investor: SES Slovenija
Architecture Bureau: ATP architects and engineers
Constructor: Strabag d.o.o., CGP d.d.
Year of Construction: 2020

ACO Products

■ Surroundings:

Multiline channels, Multitop inlet gratings, bridge gullies HSD-2, manhole covers Multitop RSS, special covers Secant, grass grid, tree grates

■ Building:

Cast iron gullies in garage house, Uniface covers for filling with any pavement, Profiline – terrace and facade drainage, hygienic gullies and stainless steel channels for drainage in restaurants

ACO gradbeni elementi,
 zastopanje d.o.o.
 Obrtniška 9
 SI-3240 Šmarje pri Jelšah
 Tel.: 03/817 18 80
 Fax: 03/817 18 82

info@aco.si
www.aco.si

ACO. creating
 the future of drainage

